



Early Childhood Council
of La Plata County

Annual Report
July 1, 2015 – June 30, 2016

*Serving Southwest
Colorado since 1998*



P.O. Box 4140
130 Rockpoint Drive, Suite C
Durango, CO 81301
970.247.0760
www.ecclaplata.org

The Early Childhood Council of La Plata County (ECCLPC) is a coalition of community agencies and members committed to the success of children and families. Since 1998, this coalition has worked to bring services & supports to children, families and providers in La Plata County and Southwest Colorado. Over the years we have strengthened our partnerships in the community and we thank you for your support. The ECCLPC is governed by a Board of Directors responsible for the overall fiscal and legal functions of the agency. The membership consists of 35 dedicated partners from 26 community organizations who agree to the mission, vision and operating principles and collaborate to achieve our common goals. Our staff and committees do the bulk of the work. We estimate over 264 hours of volunteer service per year to support this investment in our youngest citizens. Over the past year, the ECCLPC has provided professional development and quality improvement services to early childhood professionals in Archuleta and San Juan Counties. The Early Childhood Council of La Plata Council and Montelores Early Childhood Council have joined efforts and leveraged resources to support all early childhood professionals and children in the 5 counties of Southwest Colorado.

Highlights:

- ❖ 40% of programs in La Plata, San Juan and Archuleta Counties participated in quality improvement activities through ECCLPC
- ❖ 69 additional infant & toddler care slots in centers and homes in the 5-county region
- ❖ 68% of licensed centers and family home providers in La Plata, San Juan and Archuleta Counties participated in professional development through ECCLPC
- ❖ 55% of centers and 65% of family home providers in the 5-county region participated in professional development through ECCLPC
- ❖ Over 255 hours of quality improvement and regional coaching provided to staff and directors of programs in the 5-county region



Mission:

The Early Childhood Council of La Plata County (ECCLPC) is a coalition of community members and agencies working together to create a high quality comprehensive early childhood system to benefit all young children and their families.

Our mission is to support families by increasing the availability, accessibility and reliability of affordable, high quality services for all young children and families.

All children are healthy, valued and thriving.

<p style="text-align: center;"><u>Our Community Partners</u></p> <p style="text-align: center;">Archuleta Early Childhood Stakeholders Alliance Bayfield Early Education Programs Buell Professional Training Project Children's Cornerstone Community Connections/San Juan Kids Durango Public Library Durango Pregnancy Center Durango School District 9R Office of Early Childhood Licensing Specialist Invest in Kids La Plata Family Centers Coalition La Plata County Department of Human Services Mercy Employee Child Care Pine River Library San Juan Basin Health Department San Juan Board of Cooperative Educational Services Seeds of Learning Early Care and Education Center Silverton Family Learning Center Southwest District of CAEYC Southern Ute Montessori Head Start Thrive: Pagosa Pregnancy Support Center Tri-County Head Start /Early Childhood Programs United Way of Southwest Colorado Private Therapists, Parents & Community Members</p>	<p style="text-align: center;">Working together to build a better future for Colorado's children by creating a high quality comprehensive early childhood system that coordinates funding, services and partnerships.</p> <p><u>State Partners</u></p> <ul style="list-style-type: none"> • Buell Foundation • Colorado Department of Human Services, Office of Early Childhood, Divisions of Early Care & Learning and Community & Family Support • Colorado Department of Education, Office of Early Learning & School Readiness • Colorado Department of Public Health & Environment • Colorado Children's Campaign, It's About Kids Network • Early Childhood Colorado Partnership • Early Childhood Councils Leadership Alliance • El Pomar Foundation • Invest in Kids • Pyramid Plus: Center for Social Emotional Competence & Inclusion
--	--

The Early Childhood System in La Plata County:

To realize our vision “All children are healthy, valued and thriving” the ECCLPC has identified six goals and developed a strategic plan with work plans to address each item.

Quality Goal: La Plata county has quality early childhood care and education for all young children.

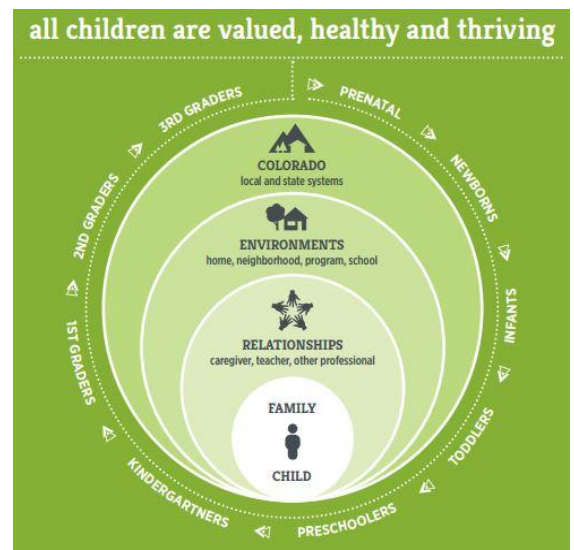
Infant/Toddler Care Goal: The early childhood system has the resources and supports to sustain the business of Infant/Toddler Care and sufficient capacity to meet demand.

Professional Development Goal: Early childhood professionals have access to a variety of professional and workforce development opportunities.

Health and Social Emotional Development Goal: Children, families and early childhood professionals have access to services, supports and training around health and well-being of young children.

Strengthen System Goal: The early childhood system has strong leadership, visibility, cross domain collaboration and community awareness.

Governance Goal: The ECCLPC has a formal governance structure that is sustainable, independent, collaborative, maturing, visionary, and supports the identity of the ECCLPC.



Learning and Development

Program Quality: The Early Childhood Council is dedicated to ensuring high-quality child care for young children in La Plata County through the following programs and assessments:

Grant	Activities Funded	Programs Funded	Amount Distributed
Colorado Infant Toddler Quality & Availability (ITQA)	Environmental Rating Scale assessments & coaching	Campbell Child and Family Center Children's World Learning Center Durango Early Learning	
	Educational materials & curriculum	First United Methodist Christian School Florida Mesa Head Start Mercy Employee Child Care	
Colorado Child Care Assistance Program Quality Improvement (CCAPQI)	Classroom & playground furnishings	Needham Head Start Pagosa Springs Head Start Park Head Start	\$48,100
	Quality Improvement coaching & technical assistance	River Mist Preschool Riverhouse Children's Center Roberta Shirley Center	
Race to the Top Quality Improvement (RTTQI)	Professional development	St. Paul's Lutheran Preschool Seeds of Learning	
Buell Foundation	Regional capacity building	Certified Environmental Rating Scale assessor & coach	\$2,500

Infant & Toddler Availability: The Early Childhood Council has dedicated resources & supports to sustain the business of Infant Toddler Care and sufficient capacity to meet demand:

Grant	Activities Funded	Participation	Amount Distributed
Colorado Infant Toddler Quality & Availability (ITQA)	Infant Toddler expansion grants	D's Day Care Kendra's Family Child Care Home Miss Emmy's Infant Care Pea Pods Child Care	\$56,000
		Riverhouse Children's Center Rivendell Early Education Center Twinkle Star's Day Care Ute Mountain Ute Child Development Center	
El Pomar Foundation			
Expanding Quality Initiative	Expanding Quality Infant Toddler training & coaching	48 hours of training & 80 hours of coaching for 15 participants	\$6,440

Professional & Workforce Development: The Early Childhood Council is dedicated to providing professionals access to a variety of professional and workforce development opportunities:

Grant	Activities Funded	Participation	Amount Distributed
Colorado Infant Toddler Quality & Availability (ITQA)	Professional development & substitute support	36 participants	\$8,200
United Way of Southwest Colorado El Pomar Foundation	Scholarships & travel stipends	28 participants	\$7,800
Southwest Office of Childcare Resource & Referral	Pre-licensing, First-Aid/CPR, Medication Admin, Standard Precautions, Provider Health Summit, Safe Sleep	147 participants	\$2,700

Health and Well Being

Social and Emotional Development: The Early Childhood Council works to ensure that children, families, and early childhood professionals have access to services, supports & training around mental health and social emotional development of young children:

Grant	Activities Funded	Participation	Amount Distributed
Buell Foundation	Pyramid Plus Approach training & coaching	14 participants	
	Social Emotional Development trainings	30 participants	
Colorado Infant Toddler Quality & Availability (ITQA)	Early Childhood Mental Health Specialist Services	11 children in 7 centers	\$3,500
Early Childhood Mental Health Specialist	Social Emotional Committee & Pyramid Leadership Team	32 participants in 5 meetings	
United Way of Southwest Colorado	Community Model Framework for Developmental Screening & Referral	77 participants in 10 meetings	

Family Support and Education

Strengthening the Early Childhood System: The Early Childhood Council works to ensure the early childhood system has strong leadership, visibility, cross domain collaboration and community awareness:

Grant	Activities Funded	Participation
Southwest Office of Childcare Resource & Referral	Childcare resource & referral services	143 Referrals

United Way of Southwest Colorado	Early Childhood Resources: www.roadmapforparents.org	3,873 website visits
El Pomar Foundation	Regional Directors Coaching	172 hours to 13 participants
Buell Foundation	“The Raising of America” public awareness event	60 community members

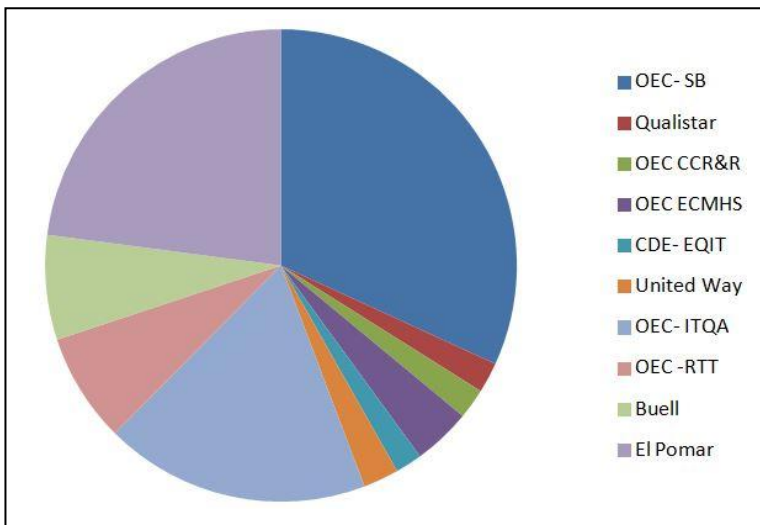
Governance and Leadership: The Early Childhood Council has a formal governance structure that is sustainable, independent, collaborative, maturing, visionary, and supports the identity of the ECCLPC:

Board Member	Employer/Affiliation	Term End
Jenny Johnston	Parent	June 2019
Lezlie Mayer	Director, Department of Human Services	March 2019
Maria Obrien	Administrator, Stone Age Tools	August 2019
Charlotte Pirnat	Community Member	March 2018
Micki Rhodes	Retired Teacher, Durango School District 9R	June 2018
Jenny Treanor	Coordinator, Profile Employee Assistance Program (EAP)	March 2018

From July of 2015 through June 2016 the ECCLPC held 10 Council meetings. In addition to the monthly council meeting, ECCLPC holds Health and Social Emotional Development Committee Meetings and Southwest Regional Advisory Board Meetings throughout the year. The total volunteer attendance by our 35 council members from 26 partner agencies contributed approximately 264 volunteer hours.

Resources and Financial Management

Major Contributors:



Sources of Income:

